

WELCOME!

Allison Kempe, MD, MPH

- Director of ACCORDS
- Ergen Family Endowed Chair in Pediatric Outcomes Research
- Professor of Pediatrics-School of Medicine

A banner for the Colorado Pragmatic Research in Health 2020 National Conference. The background is a blue-tinted aerial view of a city with mountains in the distance. The text is overlaid in white and yellow. The main title is 'Colorado Pragmatic Research in Health' in a large, white, sans-serif font. Below it is '2020 NATIONAL CONFERENCE' in a smaller, white, sans-serif font. At the bottom is the tagline 'Planning for Real World Impact' in a white, italicized, serif font.

Colorado
Pragmatic
Research in Health

2020 NATIONAL CONFERENCE

Planning for Real World Impact



ACCORDS

ADULT AND CHILD CONSORTIUM FOR HEALTH OUTCOMES
RESEARCH AND DELIVERY SCIENCE

UNIVERSITY OF COLORADO | CHILDREN'S HOSPITAL COLORADO

Welcome to COPRH Con



Planning for Real World Impact! Methods, Models, & Measures for Planning Pragmatic Research



ACCORDS

ADULT AND CHILD CONSORTIUM FOR HEALTH OUTCOMES
RESEARCH AND DELIVERY SCIENCE

UNIVERSITY OF COLORADO | CHILDREN'S HOSPITAL COLORADO



ACCORDS

UNIVERSITY OF COLORADO
CHILDREN'S HOSPITAL COLORADO

- Founded in 2014
- Co-supported by SOM and Children's Hospital Colorado
- Focused on entire life spectrum
- Fully integrated across the SOM and with strong partnerships with SPH
- Organized into programs and cores with designated leaders

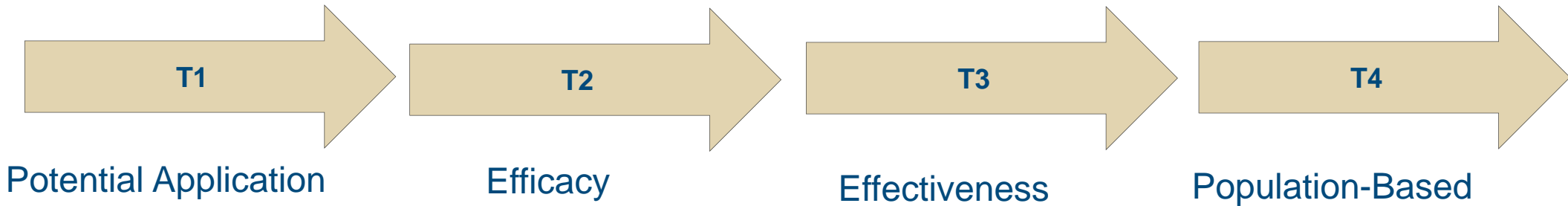
Translational Research (T3 & T4)

University of Colorado Anschutz Medical Campus



ACCORDS

ACCORDS



Colorado Clinical and
Translational Sciences
Institute
(CCTSI)

Moving Research into Practice

**“it takes 17 years, on average,
...for 14% of research
...to translate into practice”**



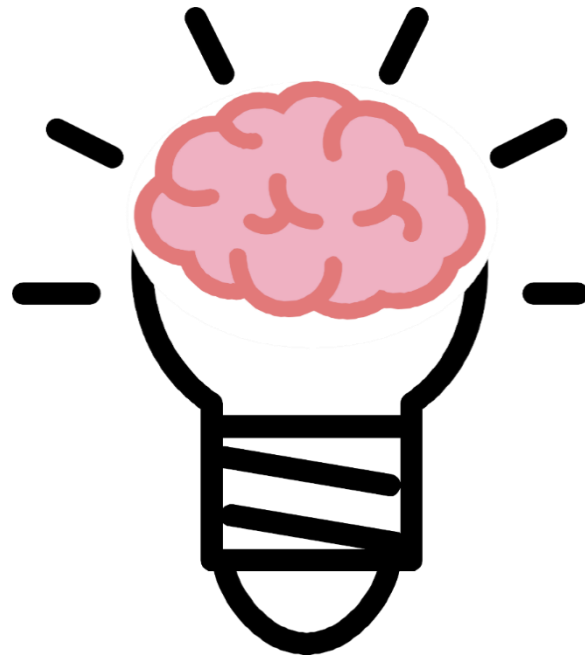
ACCORDS Strategic Objectives

Improve faculty
development in outcomes
& delivery science

Achieve greater
national visibility
for T3-T4 science

Increase competitiveness
for funding

Promote innovative
research to guide
clinical practice



Enhance capacity for
T3-T4 faculty
recruitment

ACCORDS Structure



ACCORDS

Who lives with us?

- 52 Investigators
- 39 PRA/senior PRA
- 3 Qualitative faculty
- 5 PhD trained Biostatisticians
- 13 Master's trained analysts
- 11 Administrative Staff
- 2 IT personnel

Who submits grants with us?

- 73 investigators routed 173 proposals over the last two years

ACCORDS Activities

Over past two years:

- **490** consultations
- **28** departments/divisions supported per year
- **63** recruitment efforts supported
- Over **150** faculty mentored
- **59** faculty mentored for CDA
- **699** research manuscripts in peer-reviewed journals
- **55** grants awarded totaling \$34,411,206 (**32%** success rate for federal grants submitted)



Research Training

Fellowship Training Programs

- Denver Health Health Services Fellowship
- SCORE (Surgical/Subspecialist Outcomes Research) Fellowship

NHLBI K12

- Dissemination & Implementation Science



Educational Offerings

- **Seminar Series with Invited Lecturers (most archived on-line)**
 - Behavioral Science in Health Care
 - Patient-Centered Decisions
 - Health Equity
- **Workshops**
 - Qualitative Methods
 - Designing for Dissemination
 - Modern Study Designs for Pragmatic Research
- **COPRH Con – 3 year series**

Educational Offerings



University of Colorado
Anschutz Medical Campus

**DISSEMINATION &
IMPLEMENTATION SCIENCE
GRADUATE CERTIFICATE**

<https://cctsi.cuanschutz.edu/training/clsc#dandi>

New National D&I Graduate Certificate Program

- Rigorous training in D&I Science in health services and public health research
- Leverages ACCORDS outstanding D&I faculty with other national D&I leaders as guest lecturers
- First class began June/August 2020

COPRH-CON: AN OVERVIEW

Bethany M. Kwan, PhD, MSPH
Conference Chair
Principal Investigator



ACCORDS

ADULT AND CHILD CONSORTIUM FOR HEALTH OUTCOMES
RESEARCH AND DELIVERY SCIENCE

UNIVERSITY OF COLORADO | CHILDREN'S HOSPITAL COLORADO

The Colorado Pragmatic Research in Health Conference (COPRH): Advancing Pragmatic Science for Health Services Research

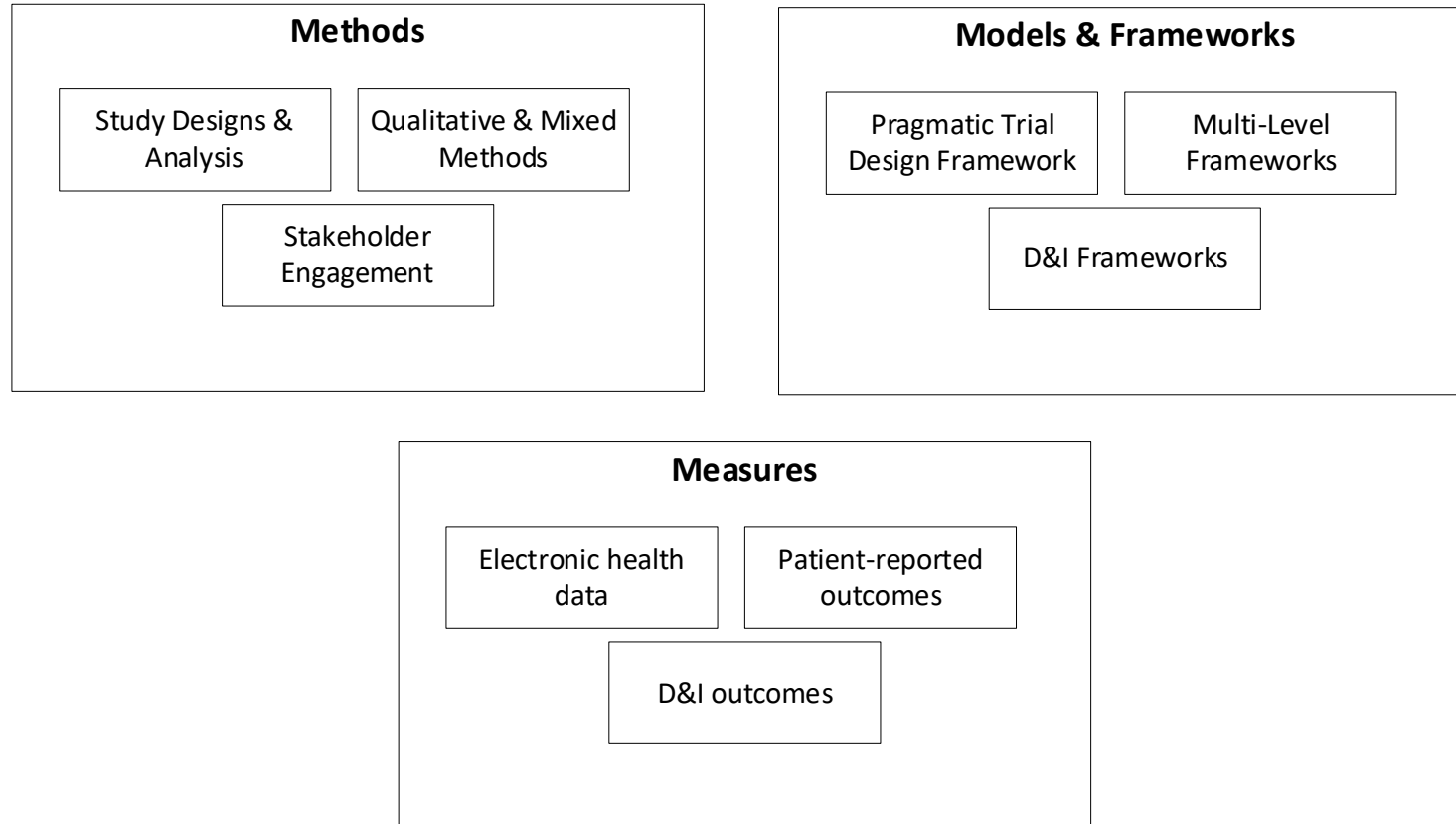
Funded by the Agency for Healthcare Research and Quality (R13HS027526)

- Describe and promote **use of pragmatic methods (methods, models, and measures) for health research** in the translation of evidence-based practices, policies, and guidelines to clinical, community, and public health settings.
- Build capacity for pragmatic research through use of web-based **tools, templates, and guidance materials** for use and testing of pragmatic methods for health research.
- Foster **team science** in use and testing of pragmatic methods for health research through creation and support of a virtual learning community.

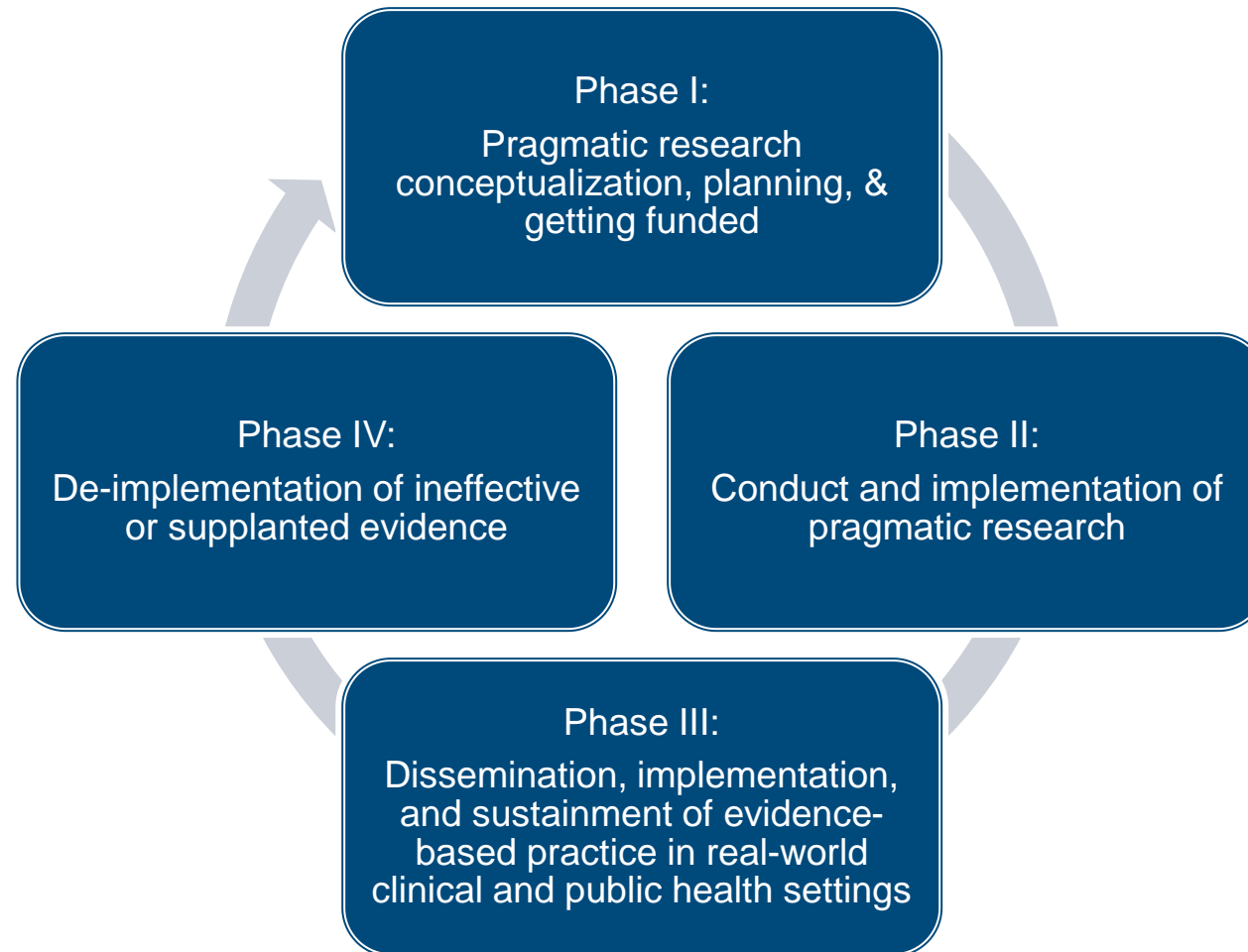
Pragmatic research

- Pragmatic research is designed to be conducted in the ‘real world’ using usual care settings, resources, and structures, and is intended to help support a decision on whether - and in what context - to deliver an intervention.
- Established and emerging pragmatic methods, measures, and models – many from the field of dissemination and implementation (D&I) science – bring enhanced sophistication, relevance, and rigor to health services and public health research
 - Frameworks and models such as the Practical, Robust Implementation and Sustainability Model (PRISM) and the Consolidated Framework for Implementation Research (CFIR) explicitly consider the practice, system, and policy context
 - Use of planning and evaluation frameworks can help address multiple levels of influence on effectiveness, implementation, and sustainability of interventions in real-world settings
- Conducting research in geographically diverse (rural, frontier, urban) and low-resource settings enhances generation of evidence that applies across diverse populations, context, and settings and addresses health inequity

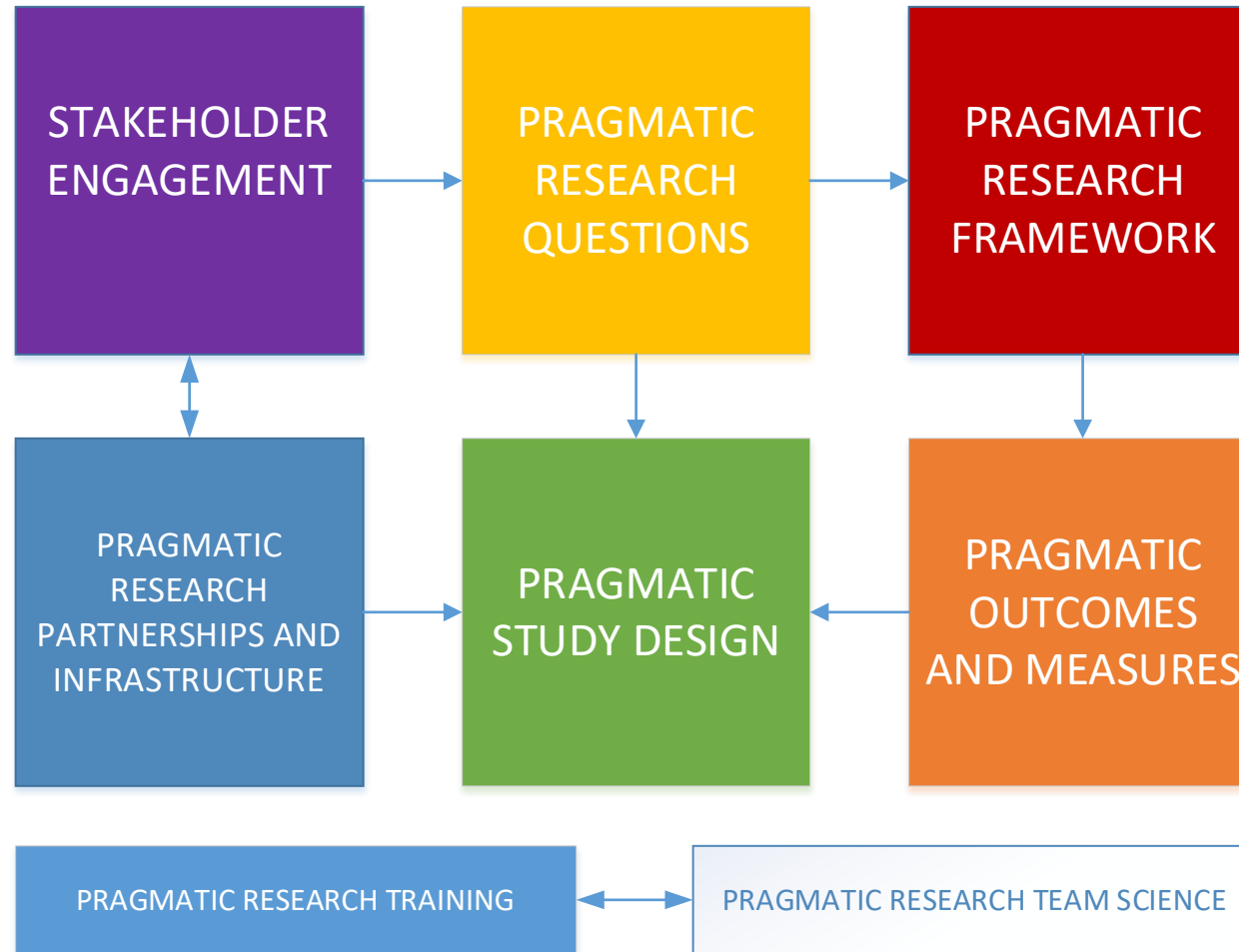
Pragmatic methods, models, and frameworks



The COPRH Con Evidence Life Cycle



Year 1: Planning Pragmatic Research



MAKING THE MOST OF COPRH-CON

Interactive sessions and networking
Preparing a pragmatic research plan for your proposal

Recorded keynote and plenary presentations

Opening Keynote

- ***Let's Get Real: Planning Rigorous Pragmatic Health Services Research for Equitable, Real-World Care***
- Amy Kilbourne

Plenary

- ***Planning Pragmatic Research and the Value of Frameworks: using PRECIS-2 as a case example***
- Amy Huebschmann

Plenary

- ***Using multiphase optimization strategy (MOST) for developing, optimizing, and evaluating multicomponent interventions***
- Kate Guastaferro

Plenary

- ***Pragmatic Challenges of Engaging Stakeholders in Pragmatic Trials***
- Matt Wynia

Plenary

- ***Designing for Dissemination: Beginning with the End in Mind***
- Ross Brownson

Closing Keynote

- ***Translating research evidence into practice to improve health equity: Lessons from a faith based physical activity intervention***
- Elva Arredondo

Live interactive and networking sessions

$$y_{ij} = \beta_{0j} + \beta_{1j}x_{ij} + e_{ij}$$

$$v_j = \beta_0 + \beta_2z_j + \beta_3\bar{x}_j + u_j$$

$$+ \beta_1x_{ij} + \beta_3\bar{x}_j + \beta_2z_j + (u_j + e_{ij})$$

Breakout Sessions

Mini-lecture plus application

Networking Lunches



Unstructured discussion with national experts on select topics



Poster session

Live discussion with poster presenters

Q&A and panel discussions



Asynchronous and synchronous Q&A with panelists and speakers

COPRH Con Workbook: Your Pragmatic Research Plan

