

MAP²ADAPT

A Roadmap to Plan for Adaptation

- Dr. Julia E. Moore
The Center for Implementation



COPRH Con

Colorado Pragmatic
Research in Health
Conference



ACCORDS

UNIVERSITY OF COLORADO
CHILDREN'S HOSPITAL COLORADO



Colorado Clinical and Translational
Sciences Institute (CCTSII)

UNIVERSITY OF COLORADO DENVER | ANSCHUTZ MEDICAL CAMPUS

Objectives

Today we will...

- Provide concrete and practical guidance to bridge the gap between adaptations in research and adaptations in practice
- Describe key concepts related to adaptations
- Use strategies to systematically approach adaptations
- Classify different types of adaptations and the reasons for making those adaptations



Dr. Julia E. Moore



- Executive Director, The Center for Implementation
- Supported on over 100 change projects
- Trained over 3000 professionals in implementation science
- Developed the most viewed implementation science mini-course (5000+ participants)
- PhD from Pennsylvania State University

The Center for Implementation

We make the science of implementation practical and accessible.

Our mission and moral imperative are to ensure that people around the world are applying theory and evidence-informed change methods to improve outcomes.

Our services include:

Training

Online courses and tailored workshops covering the full spectrum of implementation

Implementation Support

Working collaboratively to build **implementation infrastructure** to implement, spread, and scale interventions.

TCI offers evidence-based training and support to organizations and individuals as they work to foster and manage change in the workplace and across the health system.



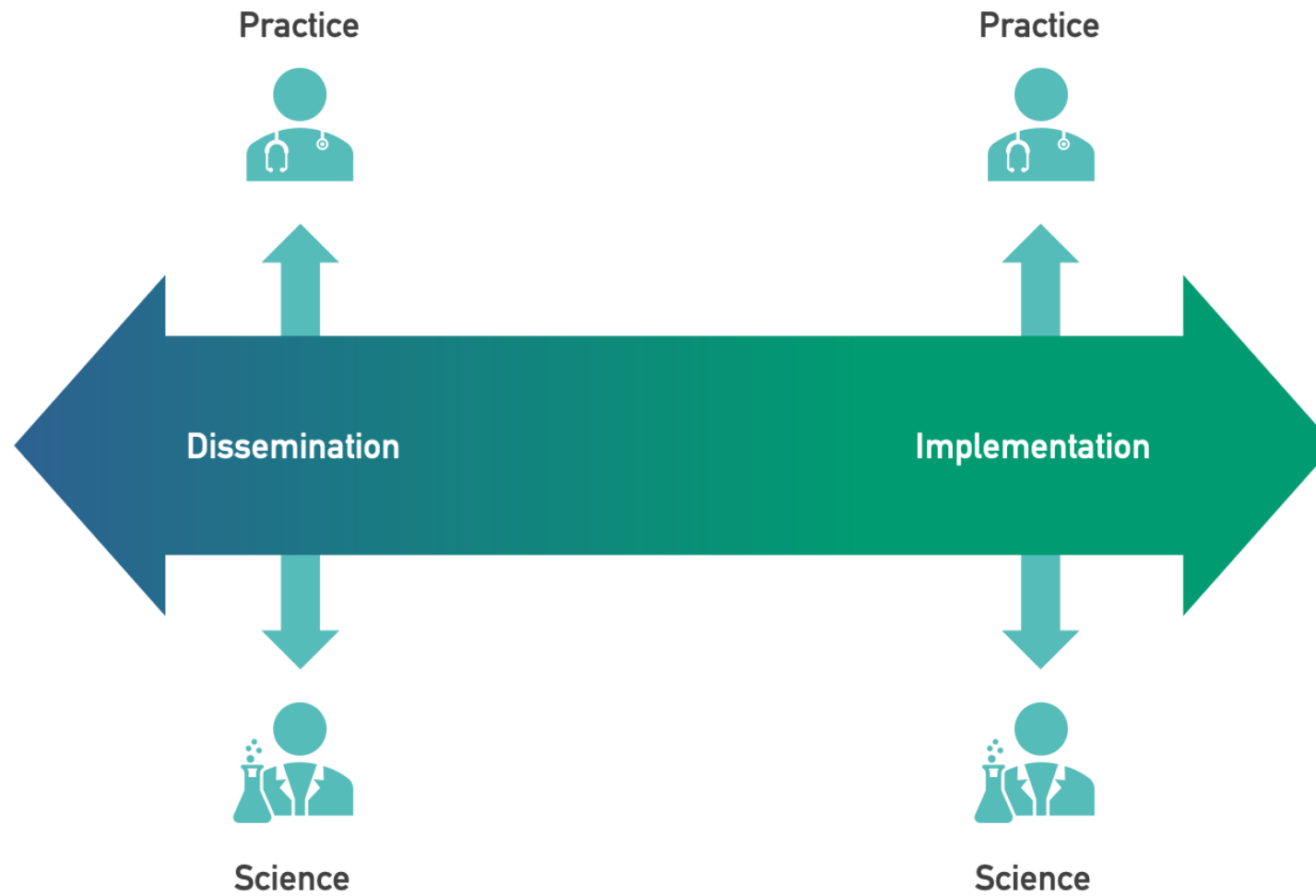


COPRH Con

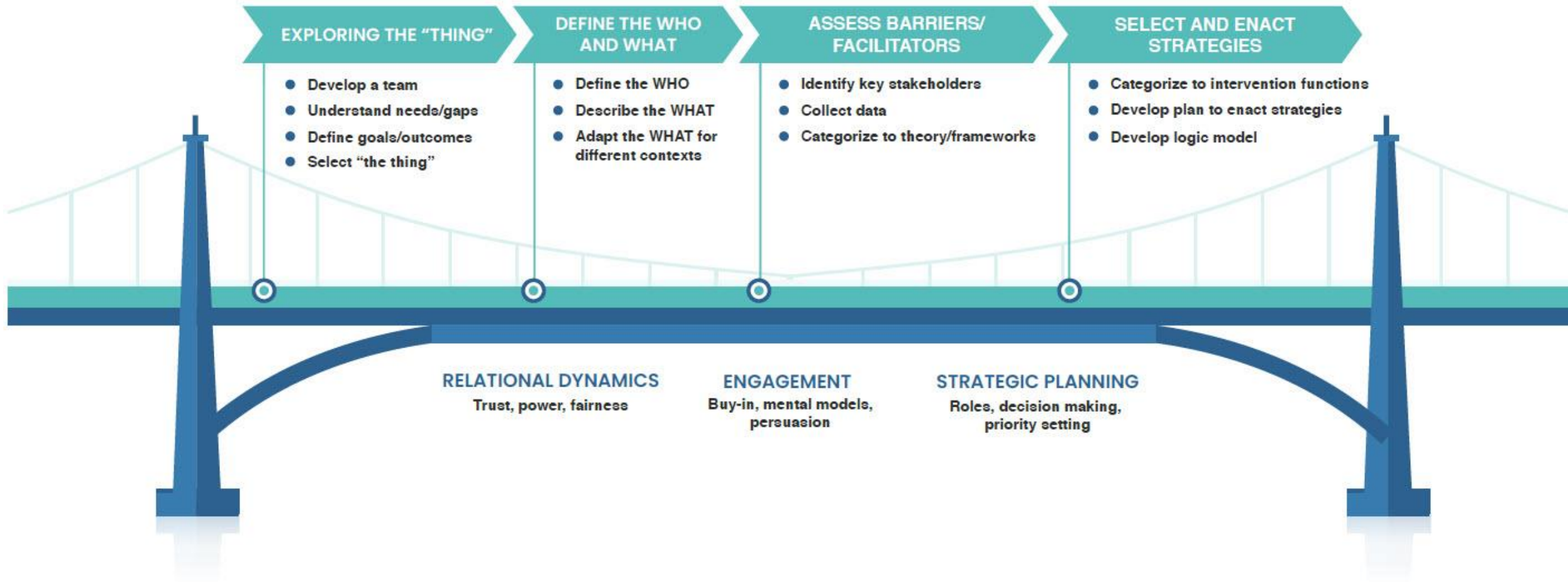
Colorado Pragmatic
Research in Health
Conference

Building a Bridge Between Implementation Research & Implementation Practice

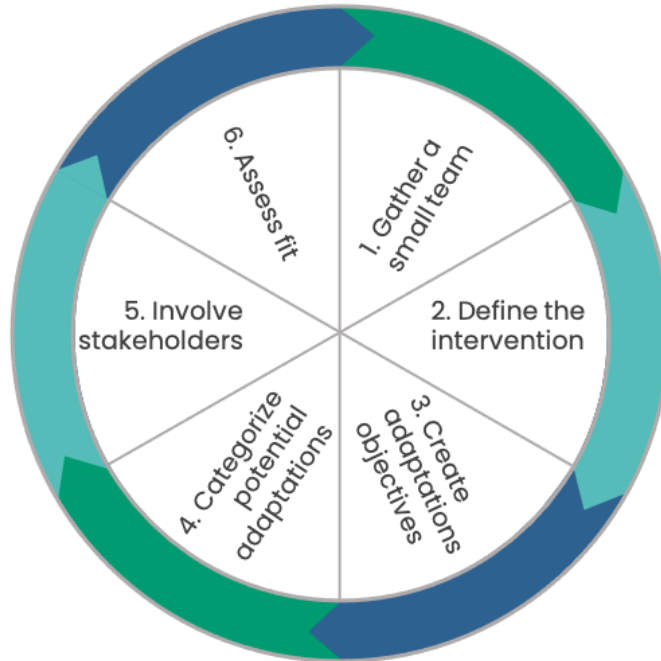




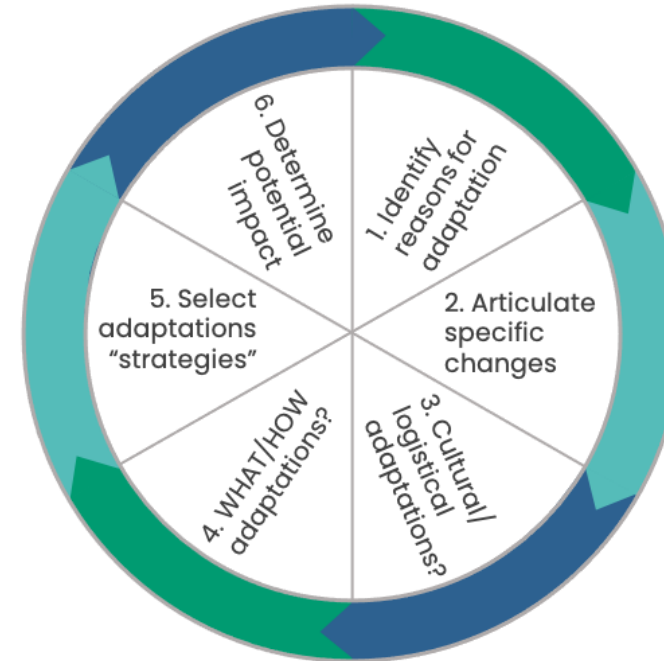
StrategEase



Map2Adapt



Exploring fit



Designing adaptations



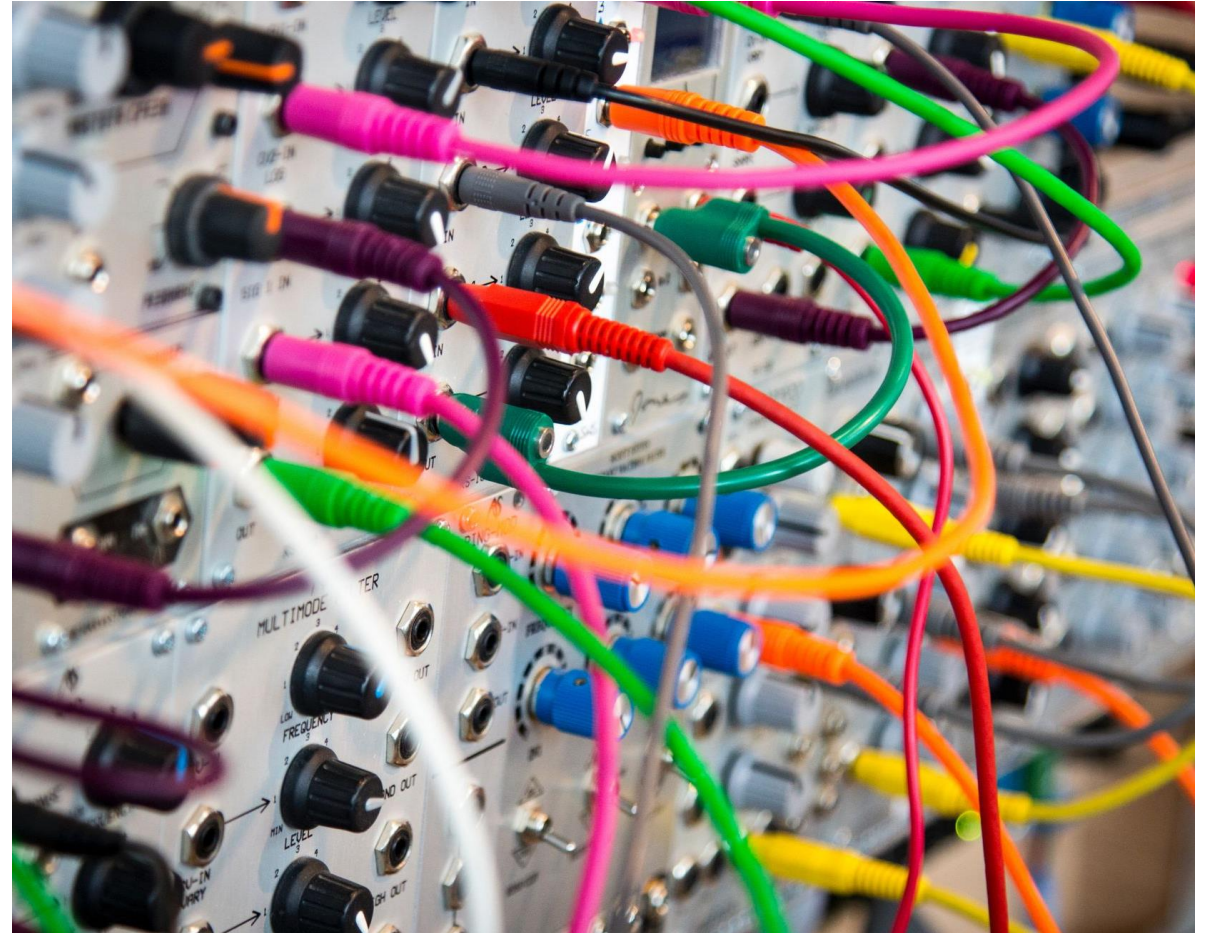
Developed from adaptation frameworks

- Framework for Reporting Adaptations and Modifications – Expanded (FRAME)
- Model for Adaptation Design and Impact (MADI)
- IM-Adapt
- Ecological Validity Framework

Science of adaptations is complicated

Our goal:

Provide concrete and practical guidance



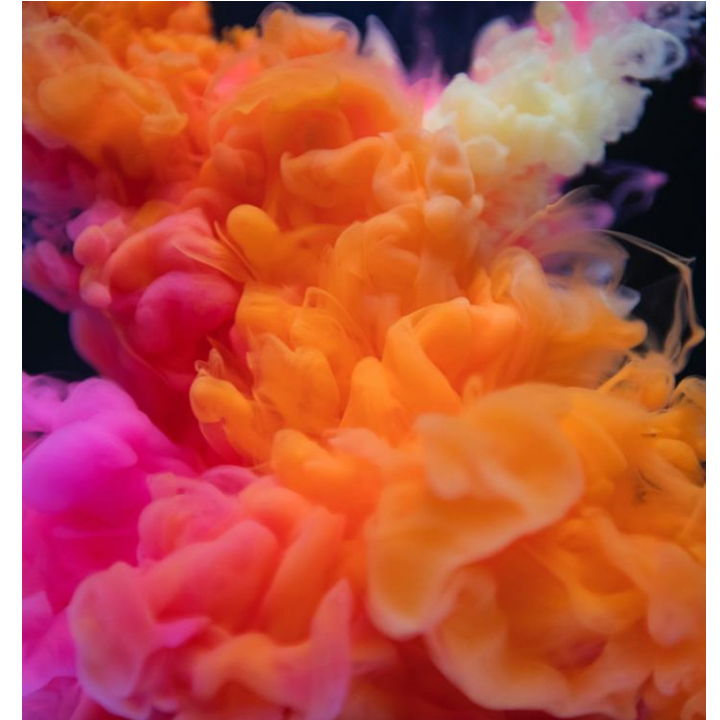
When are adaptations made?



Planned during the design phase

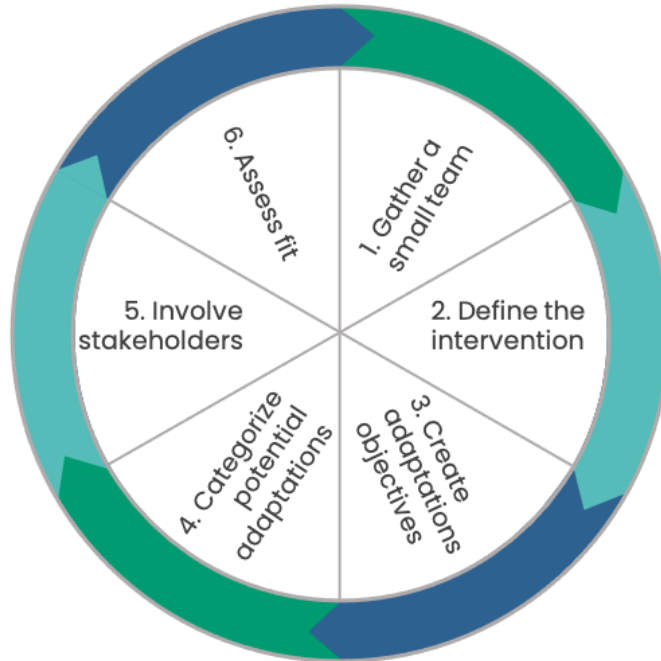


Planned during the implementation phase

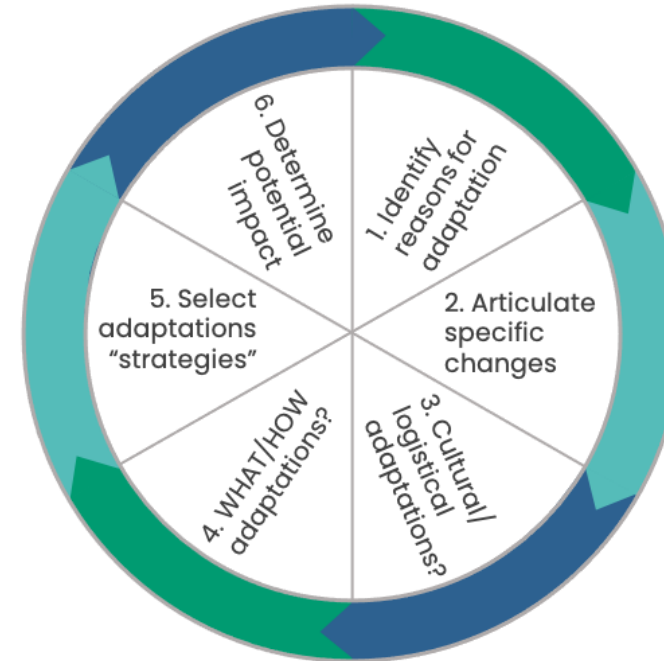


Unplanned adaptations

Map2Adapt



Exploring fit



Designing adaptations



Exploring Fit



1. Gather a small team



2. Define the intervention



3. What is the purpose of making the adaptation?

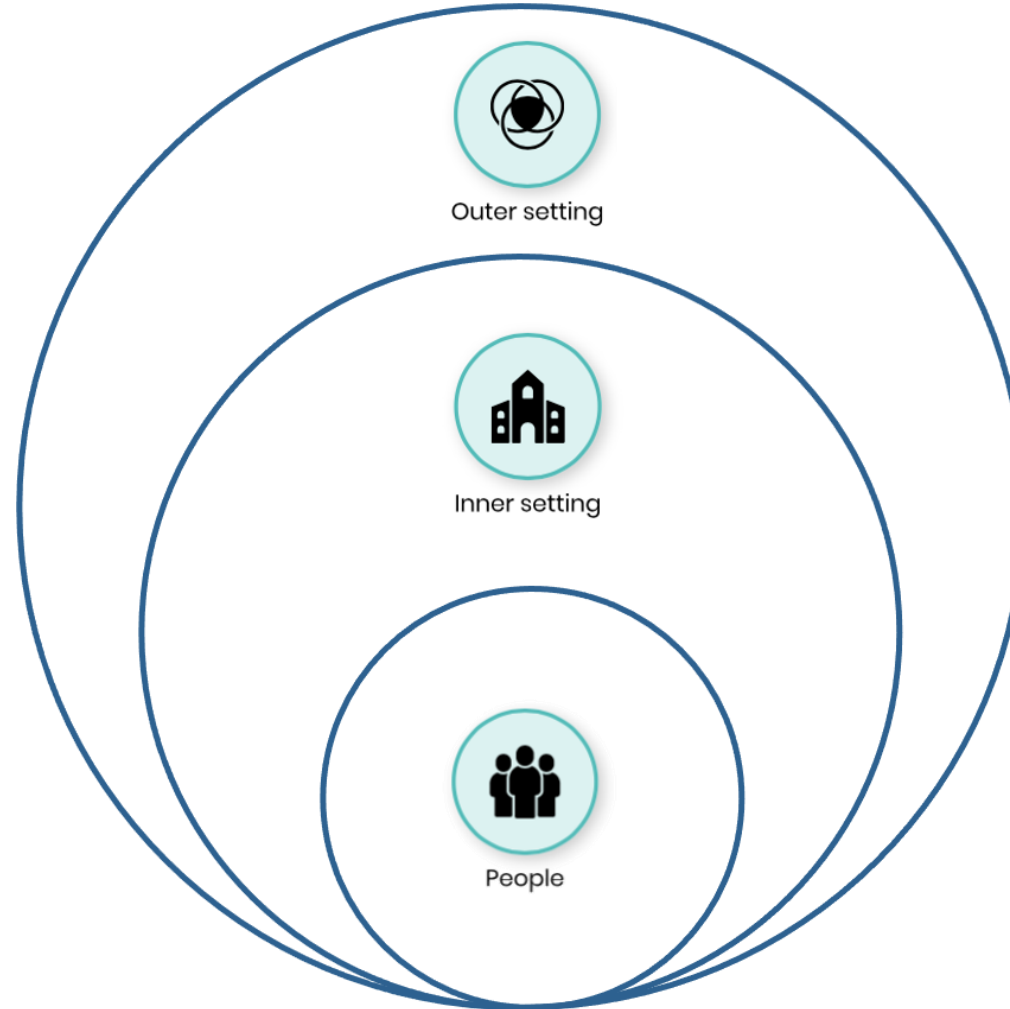


5. Involve key stakeholders



6. Is this the right fit?

4. Categorize potential adaptations



Activity #1

What are we adapting?



1. Original: Intervention to increase the mobility (e.g., walking) of older adults in hospitals

Adaptation objectives:

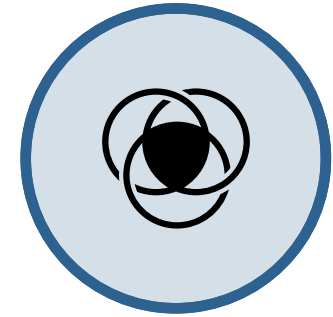
Delivering the intervention to similar older adults, but those living in long-term care homes



People



Inner Setting



Outer Setting

2. Original: Community-based behavioral health intervention

Adaptation objectives:

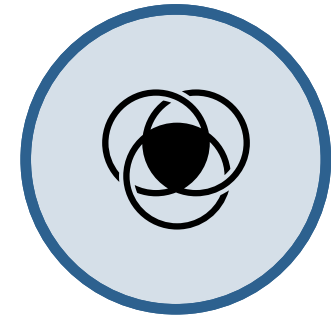
Deliver the intervention in the same place, but focusing on undocumented immigrants



People



Inner Setting



Outer Setting

3. Original: Treating post-partum hemorrhage (after delivering a baby) with misoprostol

Adaptation objectives:

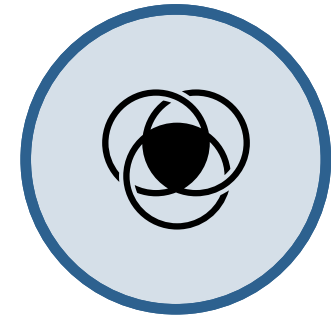
Misoprostol is not available in Senegal because it can be used for abortion, which is illegal



People



Inner Setting



Outer Setting

4. Original: Youth pregnancy and substance use prevention program designed and tested in NYC

Adaptation objectives:

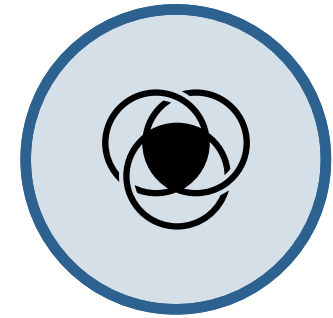
Deliver intervention in a rural, conservative, religious community with high teen pregnancy rates



People



Inner Setting



Outer Setting



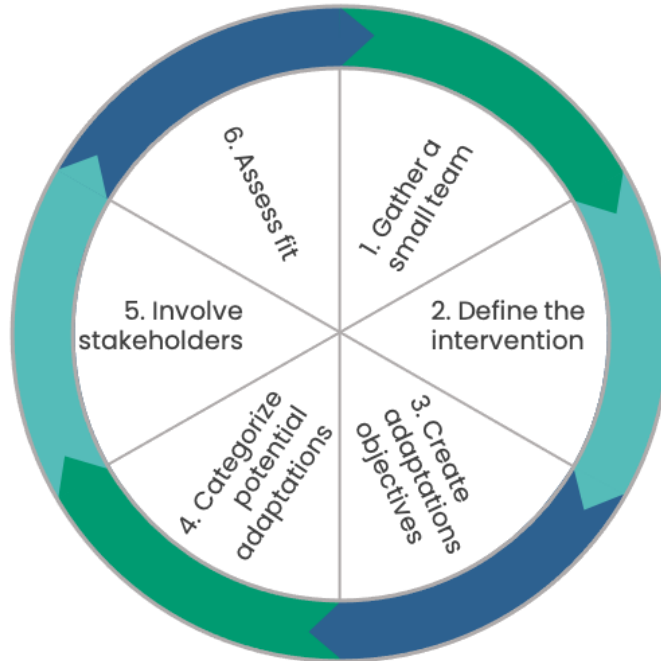
COPRH Con

Colorado Pragmatic
Research in Health
Conference

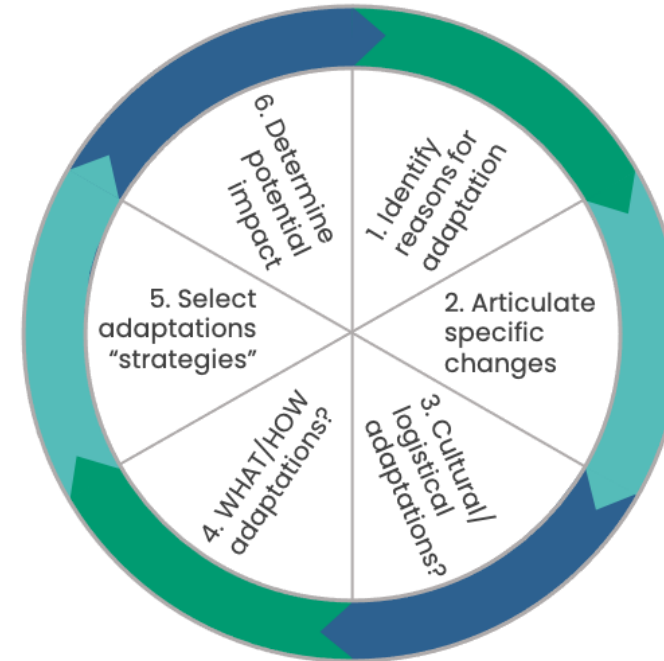
Designing Adaptations



Map2Adapt



Exploring fit



Designing adaptations



Consider why adaptation needs to be made

What are the challenges being faced by the people, inner setting, outer setting?

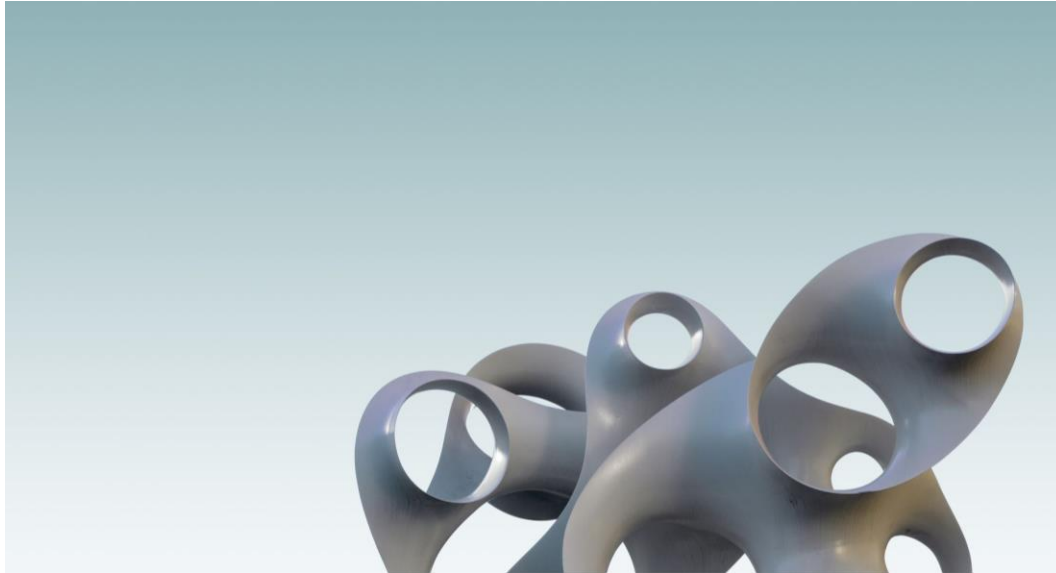


Articulate the specific changes

With your key stakeholders, think about what changes will need to be made to the original intervention.



Parse out the types of adaptations: Cultural or logistical adaptations



Cultural adaptation

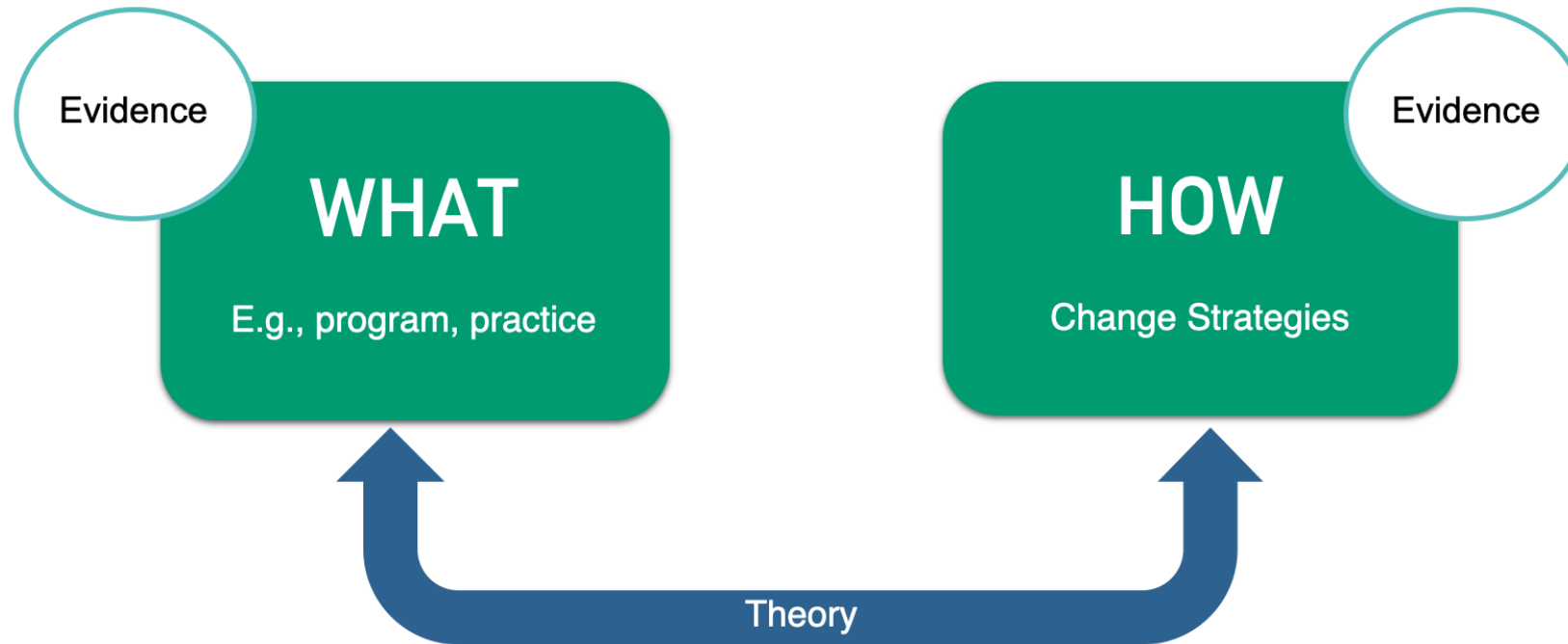
Adaptations that need to be made to address differences in the values or belief systems of the people, inner, or outer setting



Logistical

Adaptations that address operational, procedural, strategic or administrative differences

Parse out the types of adaptations: Are you adapting the WHAT or HOW?



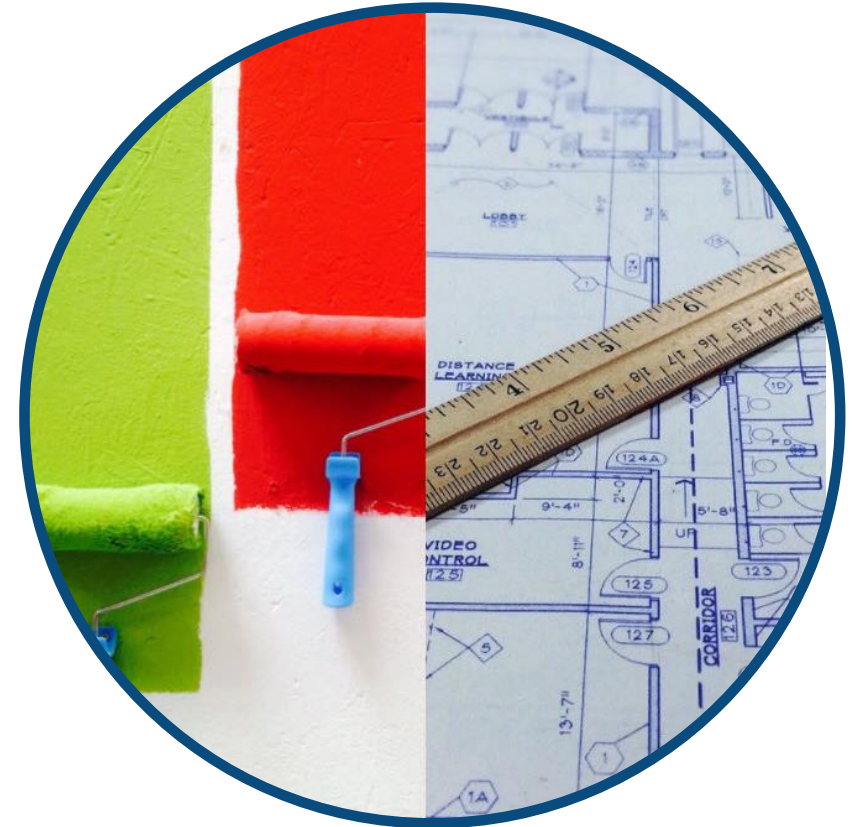
Selecting your “adaptation strategies”

- Language
- Metaphors
- Concepts
- Content
- Delivery

Hypothesize potential impact of adaptations

What is the potential impact of the adaptation?

Will it change the effectiveness of the intervention?



Activity #2

How can you approach adaptations differently?

How can you approach adaptations differently?



COPRH Con

Colorado Pragmatic
Research in Health
Conference

Wrap up



Looking for practical applications of implementation science?



Inspiring Change 2.0

Free 1.5 hour mini-course



Designing for Implementation

Guidance to select implementation strategies (using theory and evidence)



Implementation, Spread, and Scale

Guidance to implement, spread, and scale interventions

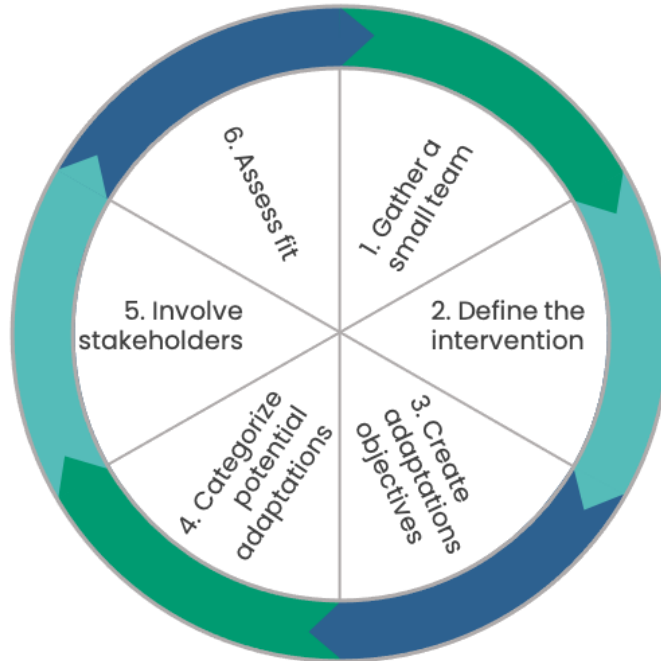
Q&A

 @TCI_ca | @Julia_E_Moore | #Map2Adapt | #COPRH21

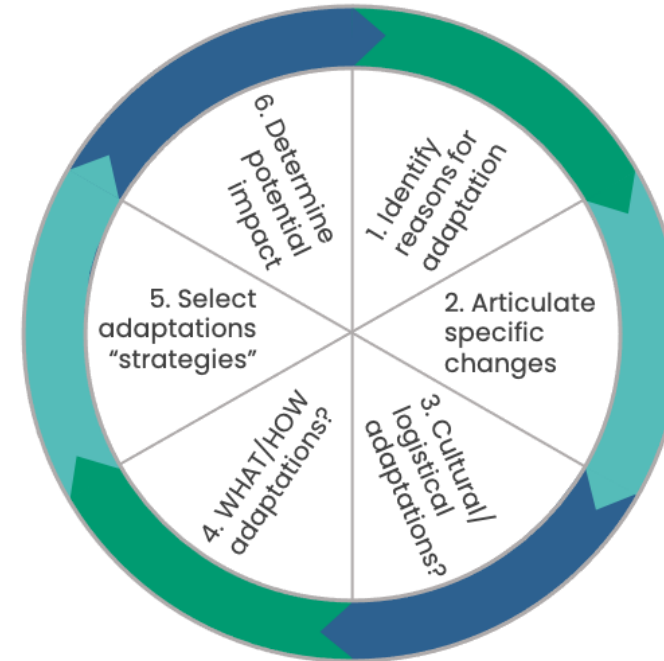


thecenterforimplementation.com

Map2Adapt



Exploring fit



Designing adaptations





COPRH Con

Colorado Pragmatic
Research in Health
Conference

THANK YOU!



ACCORDS

UNIVERSITY OF COLORADO
CHILDREN'S HOSPITAL COLORADO



**Colorado Clinical and Translational
Sciences Institute (CCTSI)**

UNIVERSITY OF COLORADO DENVER | ANSCHUTZ MEDICAL CAMPUS

